

## DISCOVER HYGIENE PLANAR 8

UNIVERSAL AND FLEXIBLE,  
OUR DECORATIVE VALVED RADIATOR WITH A FLAT FRONT,  
NO CONVECTION FINS AND 8 CONNECTION POSSIBILITIES

## General information

### HYGIENE PLANAR 8

The Hygiene Planar 8 is a decorative radiator with a flat front, without convection fins and without upper grille and side panels, for each project where hygiene is of great importance. With its flat front, the radiator has a timeless design. Furthermore you have, thanks to the 4 side- and 4 bottom connections, a variety of connection possibilities. In addition, it offers a uniform wall distance of 65 mm for types 20 and 30 at the centre connection.

Product:	decorative naked valve radiator without convection fins with 8 connections and a flat front
Finishing:	decorative flat front, without upper grille and side panels
Pre-installed:	preset Heimeier 4368 or 4369 valve insert, air vent and blind plugs
Valve insert:	The integrated adjustable valve insert (without thermostatic head) is factory-fit on the right side of the radiator; CEN certified, tested in accordance with EN215 and compatible with thermostatic heads M30 x 1,5 mm. The thermostatic valve insert is factory-set in relation to the size of the radiator. This presetting ensures optimum throughput in the radiator. Factory setting for two-pipe systems, also suitable for one-pipe systems (as long as the valve insert is adjusted to position 8).
Also supplied:	Monclac brackets with anti-lift (VDI compliant when used in combination with included anti-slide clips), screws, plugs and installation instructions
Connections:	4 x ¾" male Eurocone bottom connection (2 x centre and 2 x lateral) and 4 x ½" female side connection. Uniform wall distance of 65 mm for types 20 and 30 at the centre connection.
Lugs:	Type 10 is equipped with 2 pairs of mounting lugs
Packaging:	Every radiator is sturdily packaged in high-quality cardboard and wrapped in plastic. The radiator's characteristics are shown on the label: type – height – length.
Warranty:	10 years, as long as the installation instructions have been followed and Stelrad's warranty conditions have been met.
Paint process:	All radiators are degreased, phosphated, cataphoretically primed and powder-coated in Stelrad white 9016 as standard.
Colours:	Stelrad white 9016 + 35 different Stelrad colours and about 200 RAL-colours are possible
Max. operating pressure:	10 bar (tested to 13 bar)
Max. operating temperature:	110 °C
Conformity:	in accordance with EN442
Quality assurance:	NF: Types 20 & 30
Types:	10   20   30
Heights:	400   500   600   700   900 mm
Lengths:	400 – 1.600 mm
Depths:	49   79   160 mm



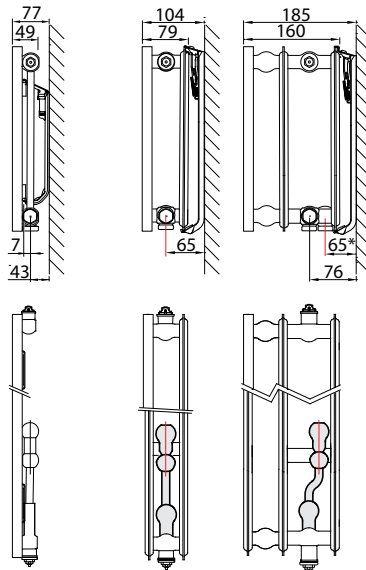
2022

## Type overview

Calculation factor  
per meter  
at 75/65/20°C  
according to EN442

Characteristic equation:

$$\Phi = K_M \times \Delta T^n$$



Height		Type 10	Type 20	Type 30	Centre distance
400	W	394	680	983	350
	kg	10,79	19,26	28,53	
	l	2,35	4,49	6,57	
	m <sup>2</sup>	0,91	1,83	2,73	
	n	1,27	1,30	1,30	
500	W	481	820	1.168	450
	kg	13,15	23,88	35,07	
	l	2,85	5,70	7,93	
	m <sup>2</sup>	1,14	2,28	3,24	
	n	1,27	1,31	1,28	
600	W	562	952	1.357	550
	kg	15,50	28,50	41,60	
	l	3,35	6,90	9,30	
	m <sup>2</sup>	1,37	2,74	4,11	
	n	1,27	1,31	1,27	
700	W	636	1.077	1.550	650
	kg	18,15	33,33	48,10	
	l	3,83	7,57	10,77	
	m <sup>2</sup>	1,60	3,20	4,79	
	n	1,27	1,32	1,29	
900	W	765	1.308	1.959	850
	kg	23,45	43,00	61,10	
	l	4,80	8,90	13,70	
	m <sup>2</sup>	2,06	4,12	6,18	
	n	1,27	1,33	1,33	

W=heat output per meter / kg=weight per meter / l=content per meter / m<sup>2</sup>=surface per meter / n=exponent  
The manufacturer reserves the right to alter any of the specifications shown in this document without prior notice.

## HYGIENE PLANAR 8

Heat outputs according to EN442



**EN442 (W) 70/50/20°C**

**EN442 (W) 55/45/20°C**

Stelrad BV: PL25/0004/E007

Height	400		
Type	10	20	30
W/m 75/65/20°C	394	680	983
<b>400</b>		203 140 0659042004	294 202 0659043004
<b>500</b>	149 103 0658041005	254 175 0659042005	368 253 0659043005
<b>600</b>	178 124 0658041006	305 210 0659042006	441 304 0659043006
<b>700</b>	208 145 0658041007	356 245 0659042007	515 354 0659043007
<b>800</b>	237 165 0658041008	407 280 0659042008	588 404 0659043008
<b>900</b>	268 186 0658041009	458 315 0659042009	662 455 0659043009
<b>1000</b>	297 206 0658041010	509 350 0659042010	735 506 0659043010
<b>1100</b>	326 227 0658041011	559 385 0659042011	809 556 0659043011
<b>1200</b>	357 248 0658041012	610 420 0659042012	883 607 0659043012
<b>1400</b>	416 289 0658041014	712 490 0659042014	1.029 708 0659043014
<b>1600</b>	475 330 0658041016	814 559 0659042016	1.177 809 0659043016

500		
10	20	30
481	820	1.168
	245 168 0659052004	351 242 0659053004
181 126 0658051005	306 210 0659052005	439 303 0659053005
218 151 0658051006	368 253 0659052006	526 364 0659053006
254 177 0658051007	429 295 0659052007	614 425 0659053007
290 202 0658051008	490 337 0659052008	701 485 0659053008
326 227 0658051009	552 379 0659052009	789 545 0659053009
363 252 0658051010	613 421 0659052010	877 606 0659053010
399 277 0658051011	674 463 0659052011	965 667 0659053011
435 302 0658051012	735 505 0659052012	1.053 728 0659053012
507 353 0658051014	858 589 0659052014	1.228 849 0659053014
581 403 0658051016	980 674 0659052016	1.403 970 0659053016

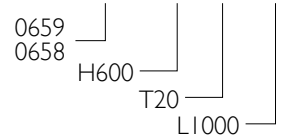
600		
10	20	30
562	952	1.357
	285 195 0659062004	409 284 0659063004
212 147 0658061005	355 244 0659062005	511 355 0659063005
254 177 0658061006	426 293 0659062006	614 426 0659063006
296 206 0658061007	497 341 0659062007	716 497 0659063007
339 236 0658061008	569 391 0659062008	819 568 0659063008
382 265 0658061009	640 439 0659062009	920 639 0659063009
424 294 0658061010	711 488 0659062010	1.023 710 0659063010
466 324 0658061011	782 537 0659062011	1.125 782 0659063011
508 353 0658061012	853 585 0659062012	1.227 852 0659063012
593 412 0658061014	995 683 0659062014	1.432 995 0659063014
678 471 0658061016	1.137 781 0659062016	1.636 1.136 0659063016

Core assortment (Stelrad white 9016) available ex factory within 10 days.  
Core assortment is subject to change, please refer to [www.stelrad.eu](http://www.stelrad.eu) for the latest information.  
Delivery time depends on the model, please refer to your distributor.

# HYGIENE PLANAR 8

On the label:  
8-CONNECTIONS HYGIENE PLAN

Art. 0659 06 20 10



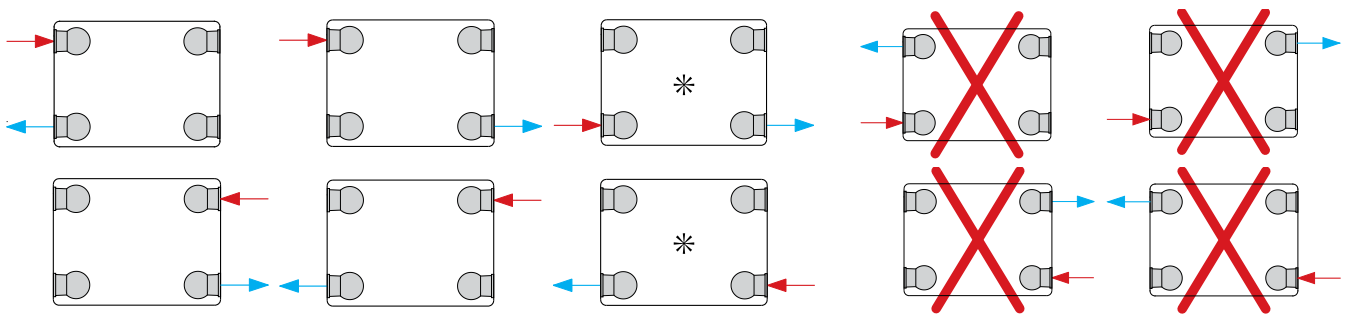
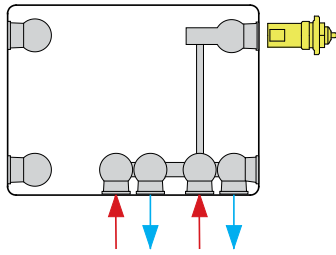
Steirrad BV: PL25/0004/E007

Height	700		
Type	10	20	30
W/m 75/65/20°C	636	1.077	1.550
<b>400</b>		321 220 0659072004	465 321 0659073004
<b>500</b>	240 167 0658071005	401 275 0659072005	581 401 0659073005
<b>600</b>	288 200 0658071006	482 330 0659072006	698 482 0659073006
<b>700</b>	336 233 0658071007	562 385 0659072007	814 562 0659073007
<b>800</b>	384 267 0658071008	643 440 0659072008	930 642 0659073008
<b>900</b>	431 300 0658071009	722 495 0659072009	1.046 722 0659073009
<b>1000</b>	480 333 0658071010	803 550 0659072010	1.163 803 0659073010
<b>1100</b>	528 367 0658071011	884 605 0659072011	1.279 883 0659073011
<b>1200</b>	575 400 0658071012	963 660 0659072012	1.395 963 0659073012
<b>1400</b>	671 466 0658071014	1.124 770 0659072014	1.628 1.124 0659073014
<b>1600</b>	768 533 0658071016	1.285 880 0659072016	1.860 1.284 0659073016

900		
10	20	30
765	1.308	1.959
	389 265 0659092004	583 397 0659093004
288 200 0658091005	486 332 0659092005	728 497 0659093005
346 240 0658091006	583 398 0659092006	873 595 0659093006
404 281 0658091007	681 464 0659092007	1.019 695 0659093007
461 321 0658091008	777 530 0659092008	1.164 794 0659093008
519 360 0658091009	875 597 0659092009	1.310 893 0659093009
577 401 0658091010	972 663 0659092010	1.456 993 0659093010
635 441 0658091011	1.070 730 0659092011	1.601 1.092 0659093011
692 481 0658091012	1.167 796 0659092012	1.747 1.191 0659093012
807 561 0658091014	1.361 928 0659092014	2.038 1.390 0659093014
923 641 0658091016	1.556 1.061 0659092016	2.329 1.588 0659093016

# CONNECTION POSSIBILITIES

Radiator with insert on the right hand side

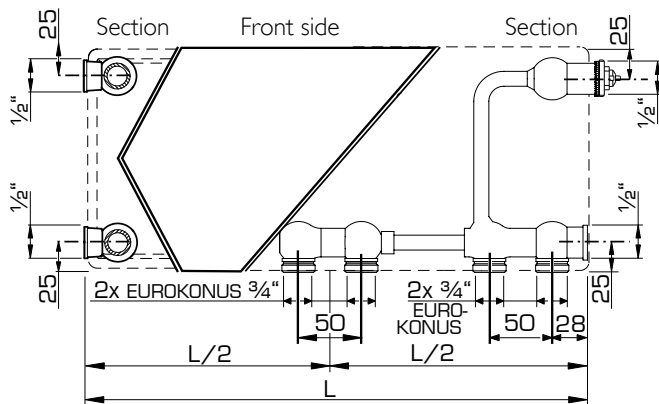


When connecting as a compact radiator the valve insert has to be removed and the plastic plugs have to be replaced with brass plugs.

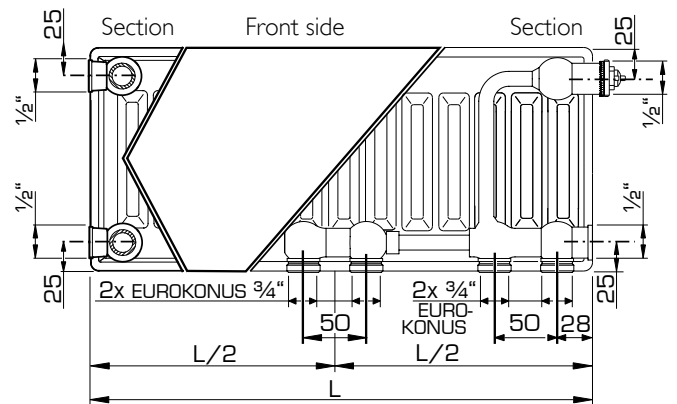
\* = a reduction in heatoutput will occur when combining low temperature heating with a high temperature difference between inlet and outlet

# MOUNTING DIMENSIONS

Type 10

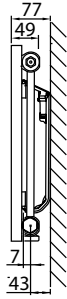


Type 20/30

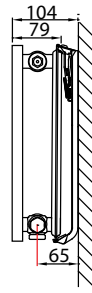


# J-BRACKETS (TYPE MONCLAC VDI 6036)

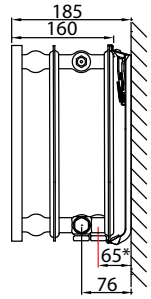
Type 10



Type 20



Type 30



\* centre connection only

Type 10		Art. N°.		Height
J-bracket VDI 6036 Cl. 2	x	y	2 pc.	mm
	115	230	R51120410	400
	115	330	R51120510	500
	115	430	R51120610	600
	115	530	R51120710	700
	115	730	R51120910	900

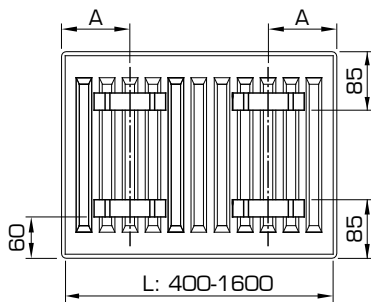
  

Types 20-30		Art. N°.		Height
J-bracket VDI 6036 Cl. 3	x	y	1 pc.	mm
	64	290	R510104	400
	64	390	R510105	500
	64	490	R510106	600
	64	590	R510107	700
	64	790	R510109	900

## LUG POSITIONS TYPE 10

Type 10

L	A
400-1100	167
1200-1600	267





Austria • Belarus • Belgium • Cyprus • Czech Republic • Estonia • France • Germany • Greece • Iceland • Ireland • Lithuania  
Luxemburg • Norway • Poland • Portugal • Slovenia • Spain • Sweden • The Netherlands • Tunisia • Ukraine • United Kingdom

**THE NETHERLANDS**

Caradon Stelrad B.V. | Kathagen 30 | 6361 HG Nuth

[WWW.STELRAD.EU](http://WWW.STELRAD.EU)

